



INSTALLATION INSTRUCTIONS

90389630

**TIGER-MATE® 255 FLOATING HITCH MAIN FRAME TURNBUCKLE
REPLACEMENT**

APPROXIMATE INSTALLATION TIME: 0.5 hours

90389630 - TIGER-MATE® 255 FLOATING HITCH MAIN FRAME TURNBUCKLE REPLACEMENT

CASE IH

Tiger-Mate® 255 TM255 Double Fold Floating Hitch 37.4FT [YHD082923 - YLD088492]

Tiger-Mate® 255 TM255 Double Fold Floating Hitch 37.4 ft [YLD089136 -]

Tiger-Mate® 255 TM255 Double Fold Floating Hitch 40.6FT [YGD082567 - YLD088492]

Tiger-Mate® 255 TM255 Double Fold Floating Hitch 40.6 ft [YLD089136 -]

Tiger-Mate® 255 TM255 Double Fold Floating Hitch 46.0FT [YGD082568 - YLD088492]

Tiger-Mate® 255 TM255 Double Fold Floating Hitch 46.0 ft [YLD089136 -]

Tiger-Mate® 255 TM255 Double Fold Floating Hitch 51.5FT [YGD082561 - YLD088492]

Tiger-Mate® 255 TM255 Double Fold Floating Hitch 51.5 ft [YLD089136 -]

Tiger-Mate® 255 TM255 Double Fold Floating Hitch 55.8FT [YGD083156 - YLD088492]

Tiger-Mate® 255 TM255 Double Fold Floating Hitch 55.8 ft [YLD089136 -]

Tiger-Mate® 255 TM255 Double Fold Floating Hitch 60.1FT [YGD082562 - YLD088492]

Tiger-Mate® 255 TM255 Double Fold Floating Hitch 60.1 ft [YLD089136 -]

Contents

1 SAFETY INFORMATION

Personal safety	1-1
General information and safety	1-2

2 KIT CONTENT

Kit overview	2-1
--------------------	-----

3 GENERAL INFORMATION

Machine orientation	3-1
---------------------------	-----

4 PRE-ASSEMBLY

PREPARING FOR ASSEMBLY

Before you begin	4-1
Turnbuckle removal	4-2

5 ASSEMBLY

Main frame turnbuckle installation

Turnbuckle installation	5-1
-------------------------------	-----

1 - SAFETY INFORMATION

Personal safety


Personal safety





This is the safety alert symbol. It is used to alert you to potential personal injury hazards. Obey all safety messages that follow this symbol to avoid possible death or injury.

Throughout this manual you will find the signal words DANGER, WARNING, and CAUTION followed by special instructions. These precautions are intended for the personal safety of you and those working with you.

Read and understand all the safety messages in this manual before you operate or service the machine.

 DANGER indicates a hazardous situation that, if not avoided, will result in death or serious injury.

 WARNING indicates a hazardous situation that, if not avoided, could result in death or serious injury.

 CAUTION indicates a hazardous situation that, if not avoided, could result in minor or moderate injury.

FAILURE TO FOLLOW DANGER, WARNING, AND CAUTION MESSAGES COULD RESULT IN DEATH OR SERIOUS INJURY.

Machine safety

NOTICE: Notice indicates a situation that, if not avoided, could result in machine or property damage.

Throughout this manual you will find the signal word Notice followed by special instructions to prevent machine or property damage. The word Notice is used to address practices not related to personal safety.

Information

NOTE: Note indicates additional information that clarifies steps, procedures, or other information in this manual.

Throughout this manual you will find the word Note followed by additional information about a step, procedure, or other information in the manual. The word Note is not intended to address personal safety or property damage.

General information and safety

Setup safety

To prevent personal injury, follow the safety messages that are on this page.

Also, read the Safety Section in the front of the Operator's Manual.

⚠ DANGER

Crushing hazard!

Read all unpacking instructions before removing components from the shipping packages. Place each shipping package on a clean, hard, level surface prior to unpacking. Fully support main and wing frames as directed before loosening or removing shipping bolts and brackets, or cutting steel bands.

Failure to comply will result in death or serious injury.

D0065A

⚠ WARNING

Falling object hazard!

This procedure requires the use of equipment that, if used improperly, could result in falling frame components. Follow all instructions. Make sure all personnel using forklifts, overhead chain hoists, jack stands, etc. read and understand all safety and instruction manuals and are properly trained.

Failure to comply could result in death or serious injury.

W0079A

⚠ WARNING

Heavy parts!

Unloading the component parts from the truck can cause personal injury. Some parts are very heavy. Keep all bystanders away from the unloading area.

Failure to comply could result in death or serious injury.

W0438A

⚠ WARNING

Cutting hazard!

Steel or plastic bands are under tension and will spring back when cut. Always wear safety glasses and protective gloves when cutting bands.

Failure to comply could result in death or serious injury.

W0170A

⚠ WARNING

Personal Protective Equipment (PPE) required.

When assembling, operating, or servicing the machine, wear protective clothing and PPE necessary for the particular procedure. Some PPE that may be necessary includes protective shoes, eye and/or face protection, hard hat, heavy gloves, filter mask, and hearing protection.

Failure to comply could result in death or serious injury.

W0353A

⚠ WARNING

Entanglement hazard!

Always keep hair and clothing away from moving parts. Do not wear loose clothing, jewelry, or other items that could entangle with moving parts and/or levers.

Failure to comply could result in death or serious injury.

W0445A

⚠ WARNING

Electrocution hazard!

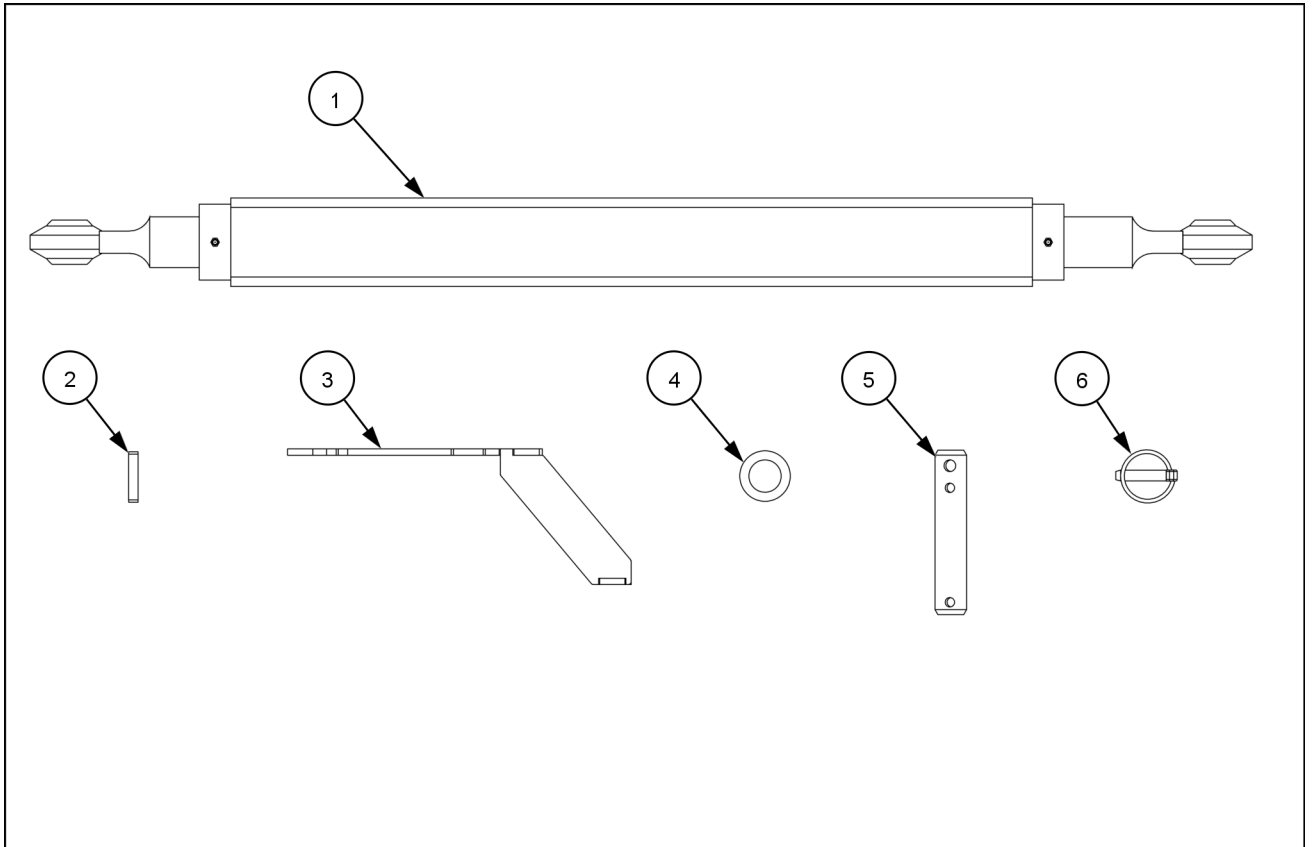
Keep the area used for servicing the machine clean and dry. Wet or oily floors are slippery. Wet spots can be dangerous when working with electrical equipment. Be sure all electrical outlets and tools are properly grounded.

Failure to comply could result in death or serious injury.

W0355A

2 - KIT CONTENT

Kit overview



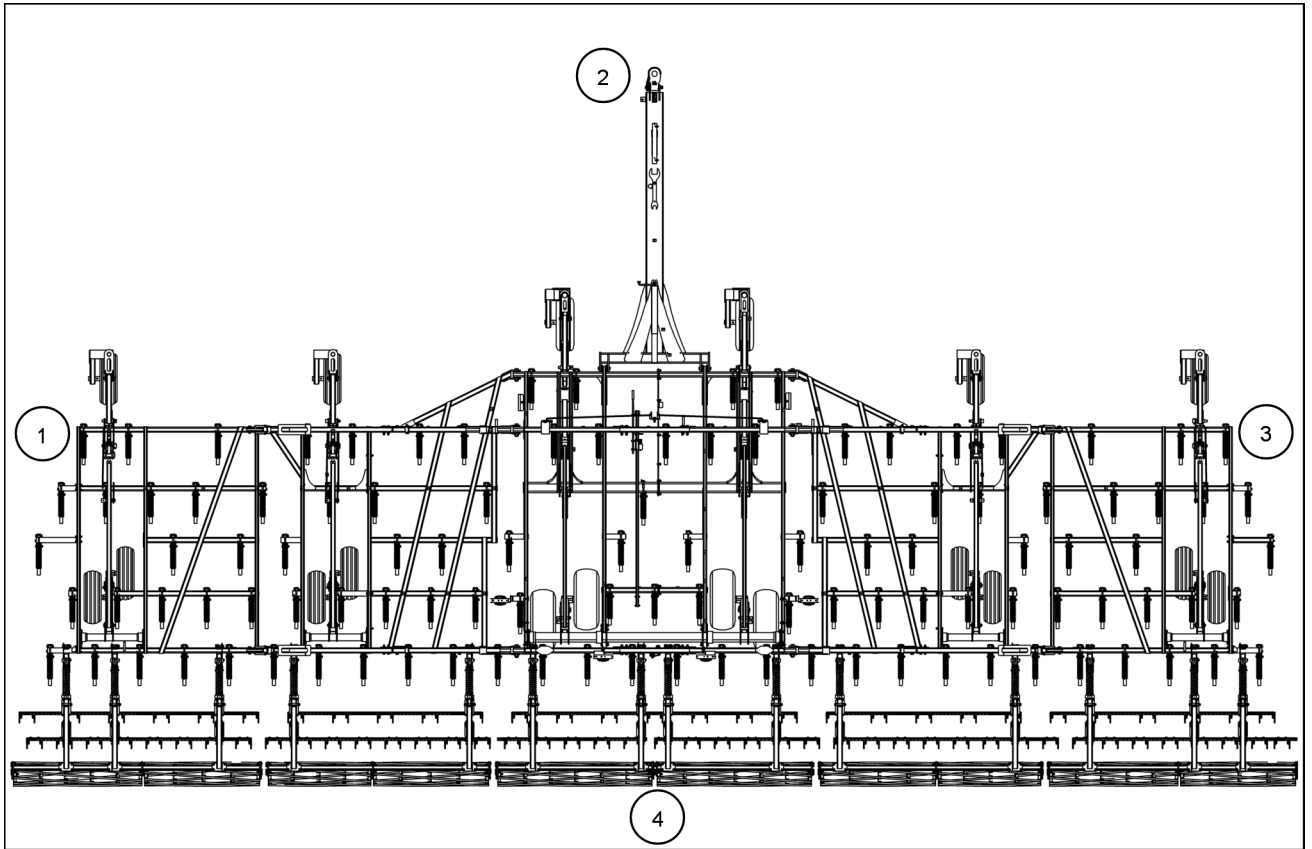
SAIS22TIL0350FA 1

Kit 90789630

Reference	Description	Quantity	Part Number
1	Main frame gauge wheel turnbuckle assembly	1	51634324
2	3/8 x 2 in slotted spring pin	4	86624061
3	1-1/4 x 6-1/2 in pin	1	51666120
4	1.281X2X0.06 in washer	2	87613235
5	Adjustment wrench	1	51666566
6	Klik pin	1	D33805

3 - GENERAL INFORMATION

Machine orientation



SAVM22TIL0349FA 1

10.7 m (35.2 ft) implement shown

Reference	Description
1	Left-hand side of the implement
2	Front of the implement
3	Right-hand side of the implement
4	Rear of the implement

The left-hand (1), the front (2) the right-hand (3), and the rear (4) of the implement are determined by standing behind the implement facing in the direction of travel.

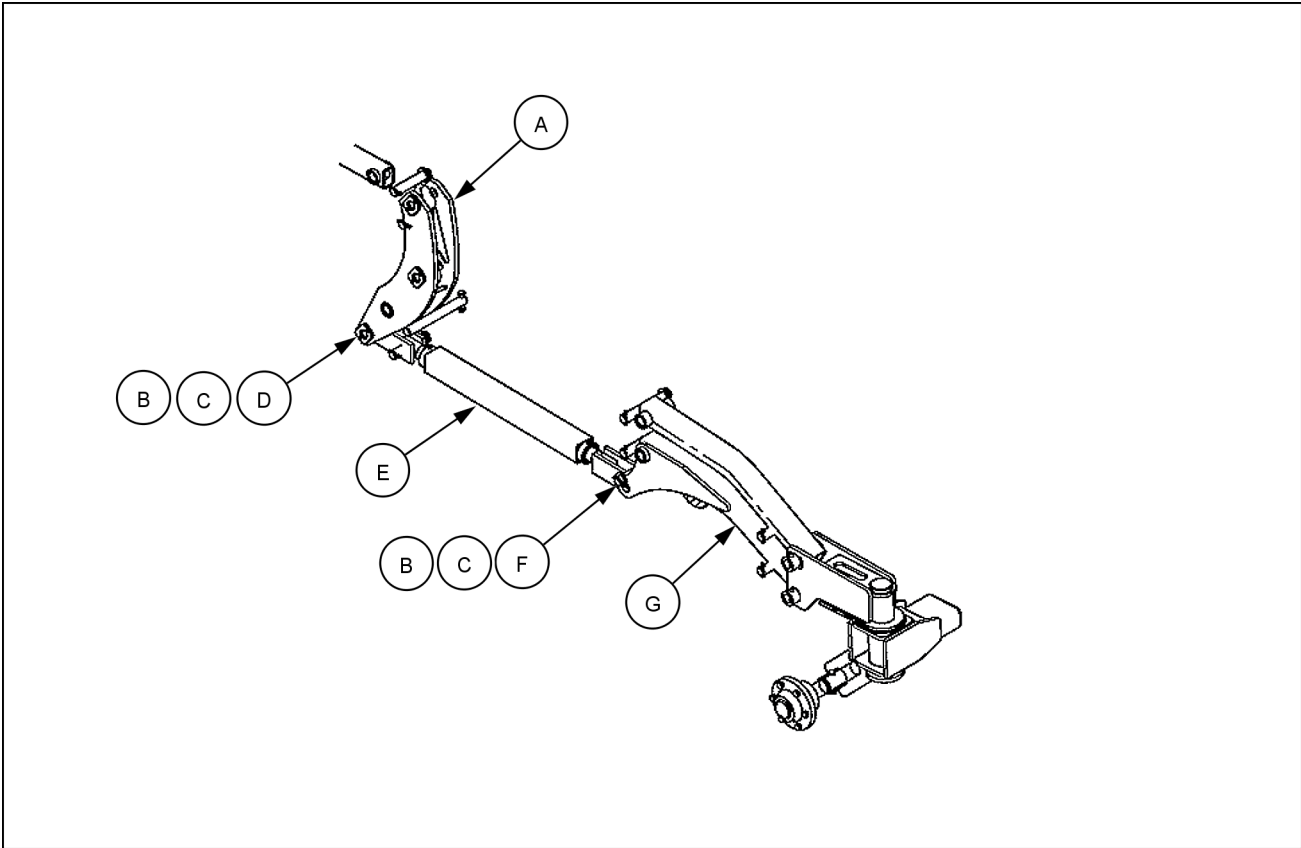
4 - PRE-ASSEMBLY

PREPARING FOR ASSEMBLY

Before you begin

1. Read, understand, and follow all of the safety messages in the operator's manual for the implement and those contained within this instruction sheet.
2. Service the implement on a firm, level surface.
3. Unsupported hydraulic cylinders can lose pressure and drop the equipment causing a crushing hazard. Do not leave equipment in a raised position while parked or servicing.
4. Lower the implement until the cultivator sweeps are resting on the ground.
5. Chock the wheels of the implement.
6. Make sure the tractor is turned off and the key is removed from the ignition if the implement is connected to a tractor.
7. Verify all of the parts in this kit.
8. Contact your CNH Industrial dealer if you have any questions regarding this installation procedure.

Turnbuckle removal



GOIL16TIL0090FA 1

Reference	Description
A	Rocker pivot
B	3/8 x 2 in slotted spring pin
C	Washer
D	1-1/4 x 6 in pin
E	Main frame gauge wheel turnbuckle assembly
F	1-1/4 x 5-1/2 in pin
G	Lower gauge wheel link assembly

1. Remove the slotted spring pin **(B)** and the washer **(C)** from the pin **(D)** in the rocker pivot **(A)**.

2. Discard the slotted spring pin **(B)**.

NOTE: A new slotted spring pin is provided in the kit.

3. Remove the pin **(D)** from the main frame gauge wheel turnbuckle assembly **(E)**.

NOTE: Keep this pin for re-assembly.

4. Remove the slotted spring pin **(B)** and the washer **(C)** from the pin **(F)**. Discard the slotted spring pin **(B)**.

NOTE: A new slotted spring pin is provided in the kit.

5. Remove the pin **(F)** from the main frame gauge wheel turnbuckle assembly **(E)** and the lower gauge wheel link assembly **(G)**. Discard the pin **(D)**.

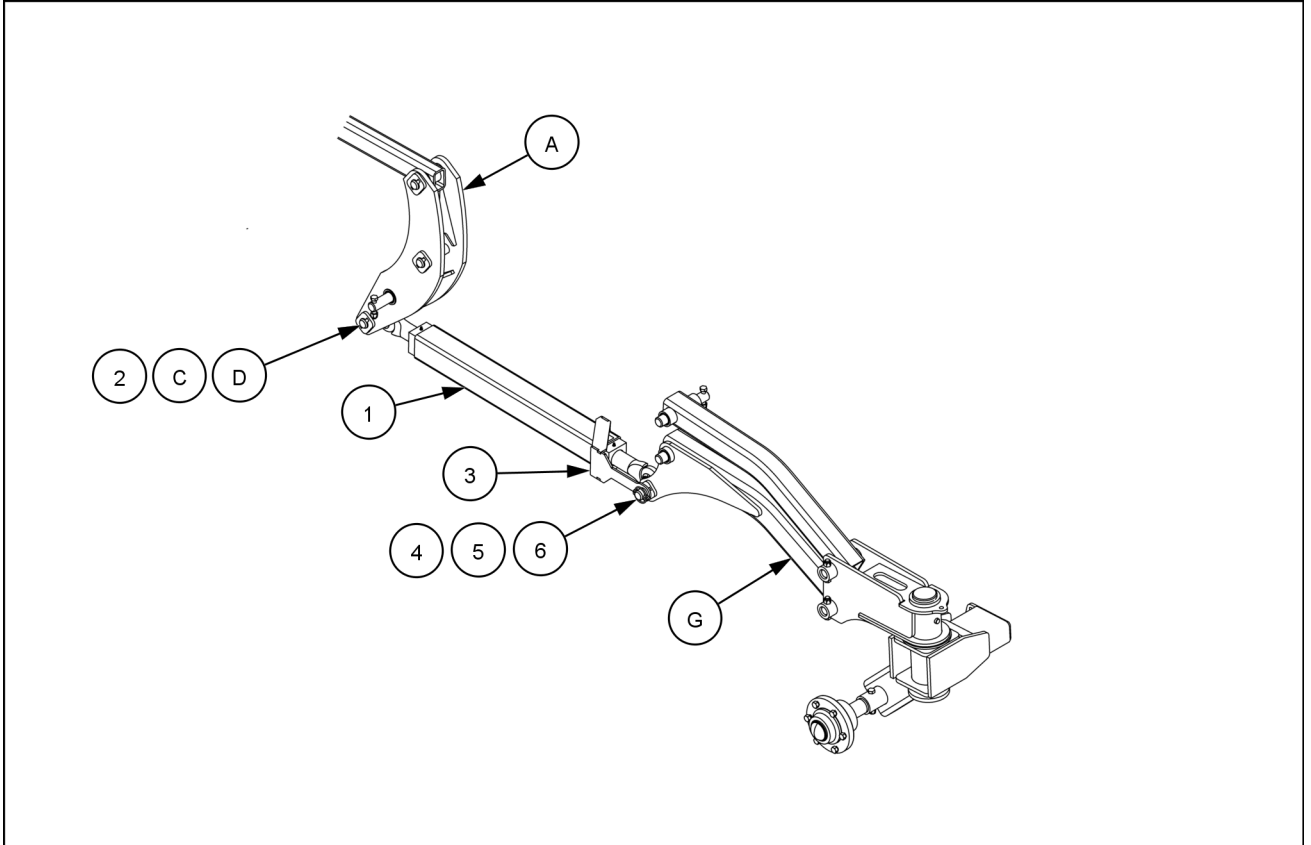
NOTE: A new pin is provided in the kit.

6. Discard the main frame gauge wheel turnbuckle assembly **(E)**.

5 - ASSEMBLY

Main frame turnbuckle installation

Turnbuckle installation

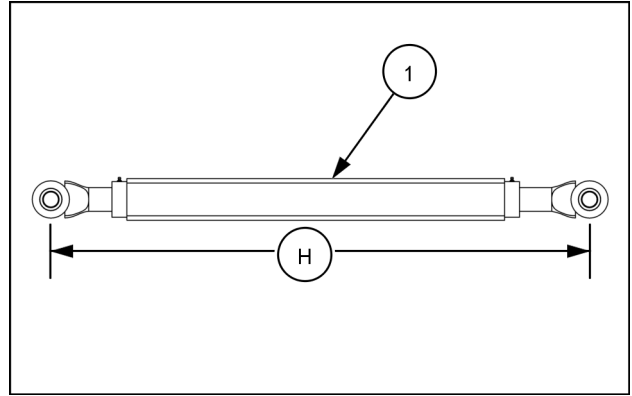


SAIS19TIL0763FA 1

Reference	Description
A	Rocker pivot
C	Washer
D	1-1/4 x 6 in pin
G	Lower gauge wheel link assembly
H	1206.5 mm (47-1/2 in)
1	Main frame gauge wheel turnbuckle assembly
2	3/8 x 2 in slotted spring pin
3	Adjustment wrench
4	1.281X2X0.06 in washer
5	1-1/4 x 6-1/2 in pin
6	Klik pin

1. Adjust the initial distance (**H**) between the center of the turnbuckle clevises on the main frame gauge wheel turnbuckle assembly (**1**) to **1206.5 mm (47-1/2 in)**.
2. Position the main frame gauge wheel turnbuckle assembly (**1**) to the lower mount of the rocker pivot (**A**).

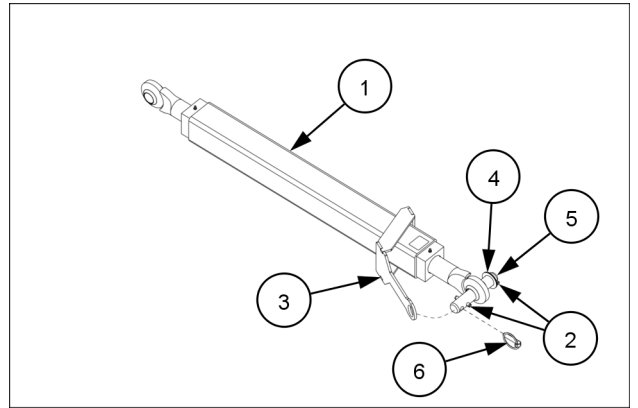
NOTE: Orient the turn buckle assembly (**1**) with the adjustment decal towards the front of the implement.



SAVM19TIL0749AA 2

3. Assemble the washer (**C**) (removed during disassembly) over the **32 x 152 mm (1-1/4 x 6 in)** pin (**D**) (removed during disassembly).
4. Insert the **32 x 152 mm (1-1/4 x 6 in)** pin (**D**) through the lower mount of the rocker pivot (**2**) and the main frame gauge wheel turnbuckle assembly (**1**).
5. Insert the **3/8 x 2 in** slotted spring pin (**2**) through the hole in the **32 x 152 mm (1-1/4 x 6 in)** pin (**D**).
6. Position the adjustment wrench (**3**) onto the main frame gauge wheel turnbuckle assembly (**1**).
7. Position the main frame gauge wheel turnbuckle assembly (**1**) to the lower mounting hole in the lower gauge wheel link assembly (**G**).
8. Insert the **3/8 x 2 in** slotted spring pin (**2**) through the hole in the **32 x 152 mm (1-1/4 x 6 in)** pin (**5**).
9. Assemble two washers (**4**) on the **1-1/4 x 6-1/2 in** pin (**5**).
10. Insert the **1-1/4 x 6-1/2 in** pin (**5**) through the lower gauge wheel link assembly (**G**) and the main frame gauge wheel turnbuckle assembly (**1**).
11. Insert the **3/8 x 2 in** slotted spring pin (**2**) through the hole in the **1-1/4 x 6-1/2 in** pin (**5**).

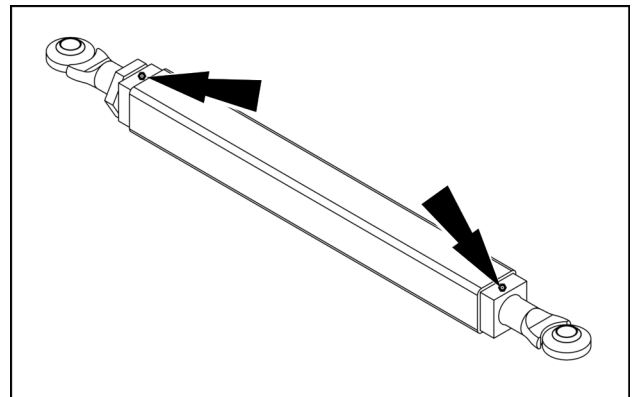
12. Assemble the adjustment wrench (3) to the 1-1/4 x 6-1/2 in pin (5).
13. Secure the adjustment wrench (3) to the 1-1/4 x 6-1/2 in pin (5) with the klik pin (6).



SAIS19TIL0812AA 3

14. Verify the distance (H) between the center of the turnbuckle clevises on the main frame gauge wheel turnbuckle assembly (1) is set to **1206.5 mm (47-1/2 in)**.
15. Grease the main frame turnbuckle (1) with **NLGI 2, LITHIUM SOAP GREASE, EXTREME PRESSURE (EP), ANTI-WEAR**.

NOTE: There are two locations on each turnbuckle.



SAIS19TIL0742AA 4



PRINTED IN U.S.A.

© 2022 CNH Industrial America LLC. All rights reserved.

No part of the text or illustrations of this publication may be reproduced.

CNH Industrial America LLC reserves the right to make improvements in design and changes in specifications at any time without notice and without incurring any obligation to install them on units previously sold. Specifications, descriptions, and illustrative material herein are as accurate as known at the time of publication, but are subject to change without notice.

Availability of some models and equipment builds varies according to the country in which the equipment is being used. For exact information about any particular product, please consult your CNH Industrial dealer.

CNH Industrial is a trademark registered in the United States and many other countries, owned or licensed to CNH Industrial N.V., its subsidiaries or affiliates.

Any trademarks referred to herein, in association with goods and/or services of companies, other than owned by or licensed to CNH Industrial N.V., its subsidiaries or affiliates, are the property of those respective companies.